

Integrating Monitoring and Adaptive Management Systems

- a planning tool used to monitor and manage sustainable tourism

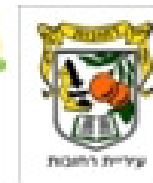
Tobias Mendelovici

Environmental and Tourism Professional

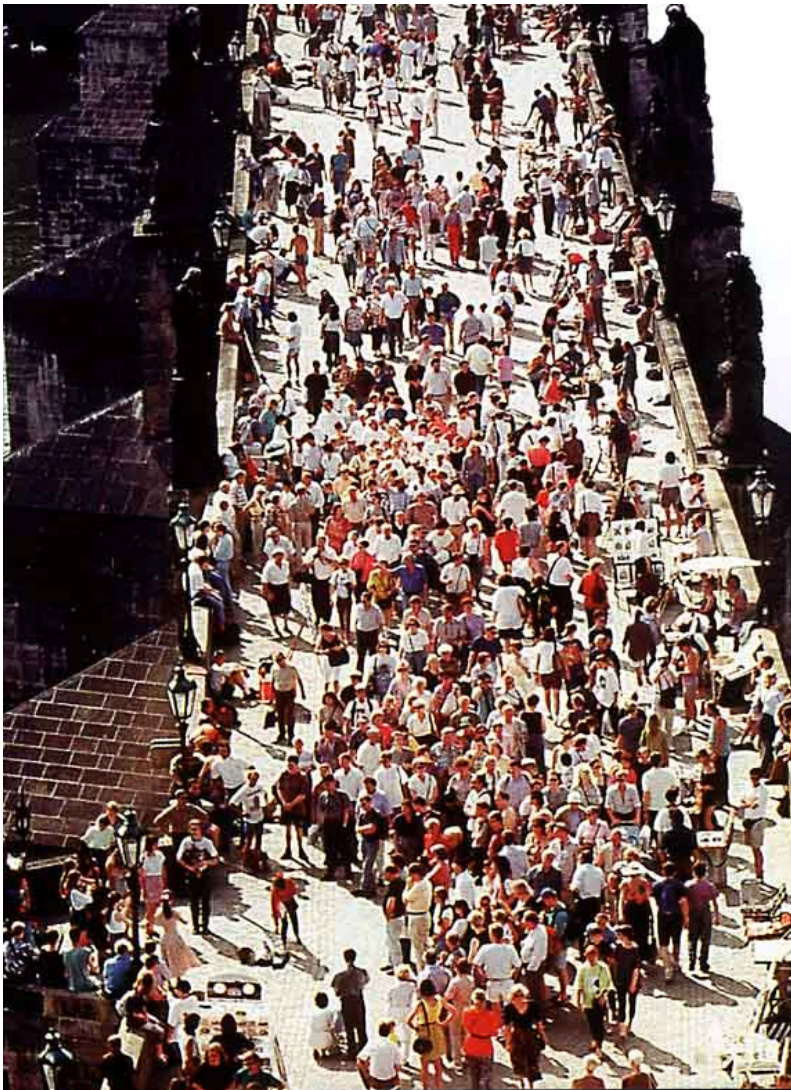
www.totaltourismsolutions.com



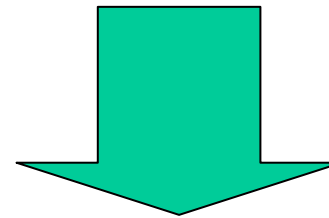
WORLD TOURISM ORGANIZATION
ORGANISATION MONDIALE DU TOURISME
ORGANIZACIÓN MUNDIAL DEL TURISMO
ВСЕМИРНАЯ ТУРИСТСКАЯ ОРГАНИЗАЦИЯ
منظمة السياحة العالمية



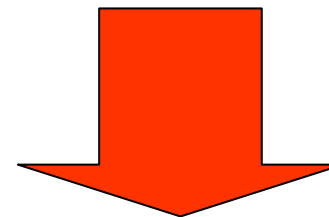
Why Monitoring?



Continuous growth of tourism



Increases pressure on sites



Need for monitoring and management

Sustainable Development Indicators

Indicators:

“Thermometer” to measure the health of tourism destinations



**Information selected to measure change in keys issues that
Affect tourism destinations and operations.**

How a monitoring program works..The Process...

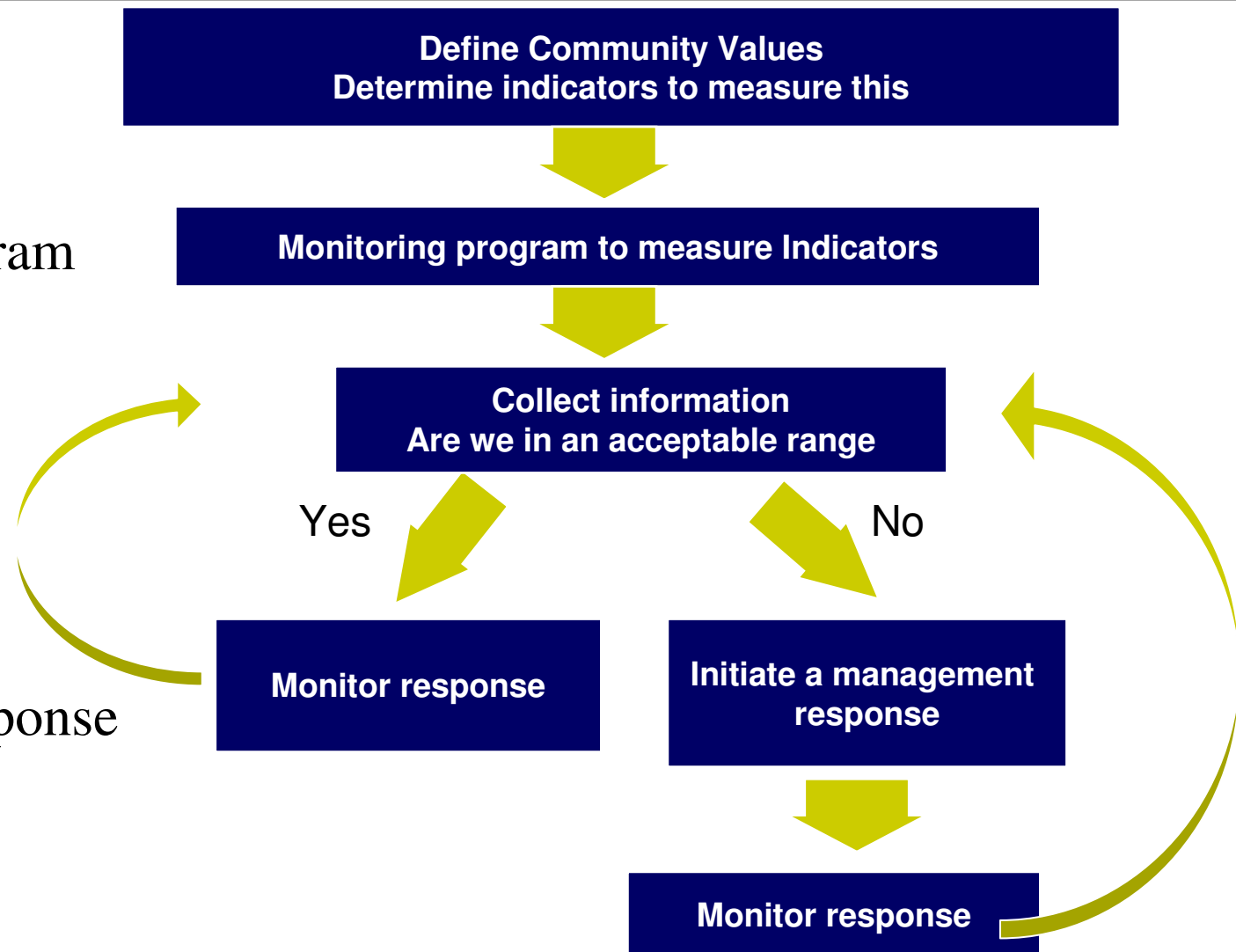
Context analysis



Monitoring program



Management response system



Examples of Monitoring



- **Australia has two models ready for Observatories**



- **Kangaroo Island www.tomm.info**
 - **community driven**
 - **running for 8 years**
 - **tourism focus**
- **Quarantine Station www.qstation.com.au**
 - **private and public sector partnership**
 - **several technical innovations**
 - **monitors total sustainability**
 - **adaptive management in place**



Adaptive management example

- Indicator: **Bandicoot mortalities**
- Acceptable range: **1 – 6 deaths in 6 months**
- Result: **7**
- Result analysis: **Deaths inside the lease area and cause is vehicles**
- **Potential adaptive management responses:**
 - ✓ **Install more warning signs**
 - ✓ **Reduce speed limit from 25 km/h to 15km/h**
 - ❖ **Install lighting where bandicoot mortalities are recorded**
 - ❖ **Alternative road surfaces to increase bandicoot visibility**
 - ❖ **Introduce a vehicle curfew until deaths reduce**



出口

EXIT



参观到此结束

THANK YOU FOR YOUR VISIT, HAVE A NICE DAY.